

EFFECTS OF INTRODUCING THE IMPROVED ENERGY MANAGEMENT SYSTEM IN THE URGENT CARE CENTER OF THE CLINICAL CENTER OF VOJVODINA

by

Djura V. OROS*, **Velimir D. ČONGRADAC**, **Veran V. VASIĆ**,
and Filip J. KULIĆ

Faculty of Technical Sciences, University of Novi Sad, Novi Sad, Serbia

Original scientific paper
<https://doi.org/10.2298/TSCI180108179O>

The Urgent Care Center of the Clinical Center of Vojvodina in city of Novi Sad, Republic of Serbia, as a specific medical facility with very demanding conditions of work and functioning, has an extensive and constant energy demands. The building is new, set into operation in 2010. The state-of-the-art concept and the equipment installed create conditions for using advanced solutions in the framework of supervisory and control systems, increasing energy efficiency and reducing operating costs in the Urgent Center. The aim of this paper is the assessment of additional possibilities for increasing energy efficiency in the building using a number of control techniques available today. According to a source of energy, the most utilized is the electric power, which is consumed for air conditioning, compressed air, and lighting. Thermal energy is used for space heating in winter and the preparation of hot water. The first step in increasing energy efficiency was the continuous monitoring and recording of consumption. The next step was the analysis of the energy consumption and the discovery of critical areas of consumption. The final step was related to the plans and algorithms for the energy reduction. To this goal, the energy consumption in the period March 2014-February 2016 was measured and recorded. According to that measuring and data analysis, an expert system based on the methods of computational intelligence that combines all the developed actions and algorithms for increasing energy efficiency in one unit was implemented.

Key words: energy efficiency, public buildings, automatic supervisory and control

Introduction

The Urgent Care Center of the Clinical Center of Vojvodina in city of Novi Sad, Republic of Serbia (UC), as a particular medical facility with the very demanding conditions of work and functioning, has an extensive and constant energy demands. The building is new, completed and set into operation in 2010. The UC consists of 5 floors (ground floor + 3 floors + attic) with a total area of 8350 m² and more than 300 rooms with different purpose.

The building is equipped with a modern building management system (BMS), controlled from highly secured technical rooms, and maintained by qualified personnel. The BMS consists of more than 6000 physical I/O points and more than 2500 virtual points. The systems controlled by the BMS include heating, cooling, variable refrigerant volume (VRV) system, air handling units (AHU), hallway lighting, the status of all equipment in distribution cabinets, power meters, UPS, etc. All data is collected and stored on a supervisory personal

* Corresponding author, e-mail: orosd@uns.ac.rs

computer, where TAC Vista SCADA software is installed. The only equipment that is not incorporated in the BMS, yet needs to be monitored, are calorimeters for heating and sanitary hot water.

The modern concept and the state-of-the-art equipment installed allow maximum comfort and working conditions for all employees. Likewise, the modern concept and the realization of the entire system create conditions that increase energy efficiency and reduce operating costs by using the advanced solutions in the framework of the supervisory and control system in the UC.

According to the source of energy, the most utilized is the electric power, which is consumed for air conditioning, compressed air, and lighting. Thermal energy is used for space heating in winter and for the preparation of hot water.

The first step in increasing the energy efficiency was related to the continuous monitoring and recording of consumption. The next step was to analyze the energy consumption and find critical areas of consumption. The final step was related to preparing plans and algorithms for the energy reduction.

To this goal, the energy consumption in the period March 2014-February 2015 was measured and recorded. The analysis was conducted and, parallel, corrective measures and actions to reduce energy consumption were introduced. The expert system (ES) based on the methods of computational intelligence that combines all the developed measures and algorithms for increasing energy efficiency in one unit was implemented. The implemented system was verified in the period March 2015-February 2016.

The problem definition

The UC is the first medical institution in Serbia which is fully computerized and uses a contemporary supervisory, control and data acquisition (SCADA) system [1, 2]. It is an energy efficient building. The annual energy consumption is 332 kWh/m². Primary energy source for heating is district heating and for cooling chillers are used. There are solar panels for hot water heating (*e. g.* solar panels for sanitary hot water provide 36% of the total sanitary hot water demands).

The building is equipped with a modern BMS that integrates the following subsystems: the seven HVAC systems (air-conditioning chamber), two chillers, two heat pumps, eight electric power substations, Diesel generator set block, five UPS systems, ventilation for the operating rooms, monitoring of consumption and power quality, supervision of elevators, VRF systems, external and internal lighting, and others.

The power consumption is measured all the time on several different points using power meters and calorimeters. The central system automatically regulates power consumption in rooms that are not occupied.

Nevertheless, in this well-designed and implemented system, there exists a space for energy efficiency improvement, which is an imperative issue today [3-6]. To achieve this goal, the implementation of optimization algorithms based on artificial intelligence (AI), often used in solving many engineering problems [7-9], has been envisaged. Continuous measurement and data acquisition create a database, necessary for the implementation and the analysis of the impact of implemented solutions. The collected data was used for designing supervisory and control algorithms for the following tasks:

- optimization of the settled temperatures by zones in the building [10-14],
- optimization of the output temperature of the cooling fluid in the chillers [15-17],
- optimization of the concentration of CO₂ in the air conditioning system [17-19],

- prediction and selection of a more efficient type of heating dependent on the weather forecasts for the coming days, and
- reduction of peak electricity consumption [7, 20].

The basic solutions for some of the previous problems are provided in [10]. The aforementioned solutions provide high-quality control, though they also leave space for their improvement through the AI based ES. During the design of the ES, particular attention was attributed to the influence of the Sun on the building energy consumption, which is a critical and an important issue in the optimization of the HVAC system functioning [17, 21]. According to that, the accurate modelling of building and modelling of the Sun impact [22-25], are the most important steps in the optimization procedure [26-28]. The modelling of natural phenomena, physical systems, and their behavior is the first and the fundamental step in defining control algorithms, which are currently more and more based on AI [8] and information communication technologies [28-30].

The expert system design

For the full realization of all optimization algorithms, the following elements were added to the existing supervisory and control system: presence sensors, magnetic contacts on the windows, dead band for heating/cooling, CO₂ control, timers, time schedules, curtains, heat curve and heat recovery [9].

Regarding the entire system level, ES implements the optimization method. Based on the outside temperature, the implementation method sets the desired value of the heaters/boilers fluid output temperature, which is a constant (maximal) in today's heating systems. The primary source of energy for heating is the municipal heating plant. However, since the facility also has two heat pumps as an alternative, choosing a heat source in a transition period is in accordance with the heating requirements of the building related to the average outdoor temperature in order to generate savings. An important method of saving energy is the heat recovery. The air returning from the room is not let out; rather, it is used for heating/cooling the outside air entering the room.

Communication between the central SCADA developed ES software and the simulation model drawn up in the energy plus tool [30] is achieved using ASCII files.

The integration of ES with the BMS system requires a comprehensive and continuous monitoring of the behavior and performance of the system.

During the analysis and selection of energy efficient methods, it is necessary for the user to enter several parameters. First, one needs to choose the type of the room. The software supports the following types of rooms: single, double and multiple bedded hospital rooms, reception, waiting rooms, halls, restaurants, rooms for staff, offices, toilets, rooms for diagnosis and therapy, operating rooms, rooms for giving birth, intensive care units, laboratory, pharmacy, autopsy rooms, technical rooms, and so on.

Then, one has to select the types of windows, interior and exterior walls, doors, floors, and ceilings. Finally, it is necessary to choose the ratio of the number of days when the space heating and cooling is required. Based on the geographic location and climatic conditions, the preset values for the desired day and night temperatures for heating and cooling are already entered in the ES, together with the humidity set point.

The data collected via the existing UC's BMS (outside temperature, the return temperature of the cooling fluid, the temperature of the cooling fluid at the chiller's output and the status of each chiller's compressor) were necessary to obtain a reliable and representative chiller's model based on the ANN. A genetic algorithm (GA) was used to determine the optimal

outlet temperature of the cooling fluid depending on the feedback and external temperature. This directly determines the optimum number of active compressors in the chiller.

In addition, GA controls the injection of fresh air into the system. The amount of fresh air injected depends on the concentration of CO₂ in the rooms and requests for their ventilation. The goal of the optimization algorithm is that the CO₂ concentration is maintained within tolerable limits with the minimum fresh air injection in the system.

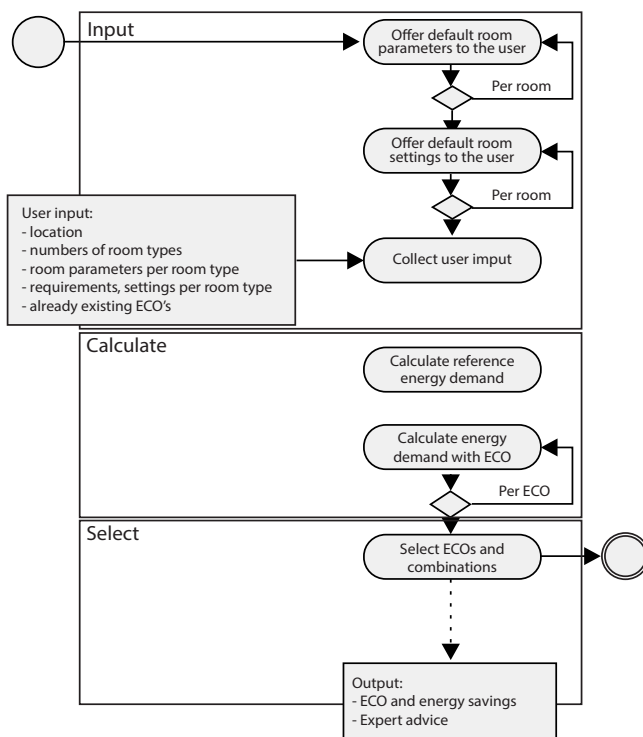


Figure 1. The algorithm for the optimization of the building with pre-defined temperature zones

Figure 1 presents the algorithm for the zoned space optimal temperature control. The ECO in the illustration refers to the current or pre-defined operating regime for the HVAC system.

Results

On completing the set consumption monitoring and the insight into all available information related to the behavior and usage in the facility, high consumption in some periods could not be explained.

However, following the daily changes in the usage of electricity and hot water, a few following examples of irrational behavior were detected:

- power consumption at night was lower, but not significantly lower than during the day,
- efficiency of heat recovery was very low or even negative in certain periods, and
- set points of air conditioning chambers have deviated from the optimal value.

Accordingly, the following improvements were made:

- a schedule for the ventilation system which implies turning off the fans at night (for 8 hours, some of them even more) was created, which led to a reduction in electrical power consumption,

Furthermore, a new optimization algorithm based on the use of solar radiation for increasing energy savings [22-25] was developed and implemented. Solar radiation provides a solar gain. Based on the clearly defined model of the clear and cloudy day, the optimization algorithm calculates the optimal positioning of the blinds on the windows, so a room uses the maximum natural light. In this way, it is possible to optimize the use of artificial lighting and select the number and type of light bulbs in order to achieve the desired brightness of the desk-top. Artificial light management is based on fuzzy logic, which also considers the heat gain of the solar radiation and recommends the blinds to be completely closed in the high outside temperatures to avoid the increased power consumption for the operation of the cooling system.

Finally, tab. 5 and fig. 6 present the direct effects of the introduced ES. The overall energy consumption is reduced by 5.9%, which is realized through the reduction of electric power consumption by 5.1% and hot water reduction for 7.7%. All savings were obtained using only software modifications of the existing SCADA system without significant investment costs. Software changes were not free, but they were far below the generated savings. Only costs were related to additional sensors and transmitters, however, it was neglectable according to the price of the whole system. The change of the defective heat exchanger had its price, but the failure on it was detected using an ES.

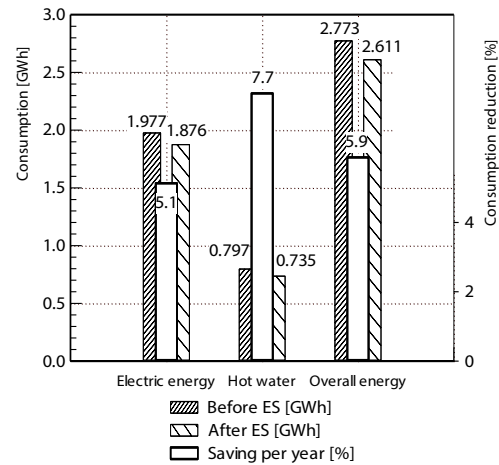


Figure 6. Annual energy consumption before and after the ES introduction

Table 5. Annual energy consumption before and after the ES introduction

	Before ES [MWh]	After ES [MWh]	Consumption reduction per year [MWh]	Consumption reduction per year [%]
Electric energy	1976.570	1875.689	100.881	5.1
Hot water	796.923	735.288	61.635	7.7
Overall energy	2773.493	2610.977	162.516	5.9

Conclusion

This paper describes the effects of introducing the improved energy management system in the Urgent Care Center of the Clinical Center of Vojvodina. This improvement in an expert system is based on artificial intelligence techniques. The central system automatically regulates power consumption in rooms that are not occupied. The algorithm for the zoned space optimal temperature control ECO was implemented into the expert system. All energy savings were obtained using only software modifications of the existing SCADA system.

The result of using such a system was an overall reduction in electricity consumption from 1976570 kWh per year to 1875689 kWh per year and a decrease in energy consumption for water heating from 796923 kWh per year to 735288 kWh per year.

The realized savings in electricity consumption of 5.1% and in the hot water consumption of 7.7% demonstrate the correctness of the proposed approach to solving the problems of energy efficiency and justifying the introduction of the control algorithms based on computational intelligence methods in the energy flow control systems in the urgent care center of Vojvodina.

Acknowledgment

This paper is produced as a result of work on the project from the Program of technological development of the Republic of Serbia, *Development of an intelligent control system for increasing energy efficiency of buildings*, registration number TR 33013 financed by the Ministry of Education, Science and Technological Development of the Republic of Serbia.

References

- [1] Kulić, F. *et al.*, Development and Implementation of Monitoring and Control of the Flow of Energy in the Process Industry: Part I – Basic Concept, *Journal on Processing and Energy in Agriculture (former PTEP)*, 13 (2009), 3, pp. 216-221
- [2] Kulić, F. *et al.*, Development and Implementation of Monitoring and Control of the Flow of Energy in the Process Industry: Part II – Advanced Functions, *Journal on Processing and Energy in Agriculture (former PTEP)*, 13 (2009), 4, pp. 307-311
- [3] Gvozdenac, D., *et al.*, Serbian Energy Efficiency Problems, *Thermal Science*, 18 (2014), 3, pp. 683-694
- [4] Jooa, J., *et al.*, Optimum Energy Use to Satisfy Indoor Air Quality Needs, *Energy and Buildings*, 46 (2012), Mar., pp. 62-67
- [5] Petrović, J., *et al.*, Reasons for Heat Demand Changes and Effects on Planning and Development of Heating Systems, *Thermal Science*, 16 (2012), Suppl. 1, pp. S63-S77
- [6] Mihić, M., *et al.*, Application and Importance of Cost-Benefit Analysis in Energy Efficiency Projects Implemented in Public Buildings: The Case of Serbia, *Thermal Science*, 16 (2012), 3, pp. 915-929
- [7] Ilić, S., *et al.*, F., Hybrid Artificial Neural Network System for Short-Term Load Forecasting, *Thermal Science*, 16 (2012), Suppl. 1, pp. S215-S224
- [8] Thomas, B., *et al.*, Feed-Forward in Temperature Control of Buildings, *Energy and Buildings*, 37 (2005), 7, pp. 755-761
- [9] Čongradac, V., *et al.*, Assessing the Energy Consumption for Heating and Cooling in Hospitals, *Energy and Buildings*, 48 (2012), May, pp. 146-154
- [10] Čongradac, V., *et al.*, Methods for Assessing Energy Savings in Hospitals Using Various Control Techniques, *Energy and Buildings*, 69 (2014), Feb., pp. 85-92
- [11] Kolokotsa, D., *et al.*, Advanced Fuzzy Logic Controllers Design and Evaluation for Buildings' Occupants Thermal-Visual Comfort and Indoor Air Quality Satisfaction, *Energy and Buildings*, 33 (2001), 6, pp. 531-543
- [12] Galasiu, A. D., Newsham, G. R., Energy Savings Due to Occupancy Sensors and Personal Controls: A Pilot Field Study, in: *Proceedings*, 11th European Lighting Conference, Istanbul, Turkey, 2009
- [13] De Lia, D., Hospital Capacity, Patient Flow, and Emergency Department Use in New Jersey, Report to the New Jersey Department of Health and Senior Services, Trenton, N. J., USA, 2007
- [14] Čongradac, V., Kulić, F., Recognition of the Importance of Using Artificial Neural Networks and Genetic Algorithms to Optimize Chiller Operation, *Energy and Buildings*, 47 (2012), Apr., pp. 651-658
- [15] Thomas, B., *et al.* Feed-Forward in Temperature Control of Buildings, *Energy and Buildings*, 37 (2005), 7, pp. 755-761
- [16] Chow, T. T., *et al.*, Global Optimization of Absorption Chiller System by Genetic Algorithm and Neural Network, *Energy and Buildings*, 34 (2002), 1, pp. 103-109
- [17] Čongradac, V., Kulić, F., The HVAC System Optimization with CO₂ Concentration Control Using Genetic Algorithms, *Energy and Buildings*, 41 (2009), 5, pp. 571-577
- [18] ***, U. S. Department of Energy, Federal Energy Management Program, Demand-Controlled Ventilation Using CO₂ Sensors, Handbook/Sourcebook, 2004
- [19] Selman, S., Dyer, D., Analytical Prediction of Carbon Dioxide Concentrations in Variable Air Volume Systems, *Proceedings*, Clima 2007 WellBeing Indoors, Helsinki, Finland, 2007
- [20] Ilić, S., *et al.*, F., Short-Term Load Forecasting in Large-Scale Electrical Utility Using Artificial Neural Network, *Journal of Scientific and Industrial Research JSIR*, 72 (2013), 12, pp. 739-745
- [21] Čongradac, V., *et al.*, Algorithm for Blinds Control Based on the Optimization of Blind Tilt Angle Using a Genetic Algorithm and Fuzzy Logic, *Solar Energy*, 86 (2012), 9, pp. 2762-2770
- [22] Čongradac, V., *et al.*, Soft Sensor for Prediction of Solar Illuminance in a Room, *Proceedings*, 46th SMEITS – Međunarodni Kongres i Izložba o Klimatizaciji, Grejanju i Hladenju (in Serbian), Belgrade, Serbia, 2015
- [23] Lazarević, S., *et al.*, Modelling of Solar Heat Gain of Thermal Zone, *Proceedings*, 3rd International Conference on Electrical, Electronic and Computing Engineering IeETRAN, Zlatibor, Serbia, 2016
- [24] Heidarzadeh, H., *et al.*, Convective Heat Transfer over a Wall Mounted Cube at Different Angle of Attack Using Large Eddy Simulation, *Thermal Science*, 18 (2014), Suppl. 2, pp. S301-S315
- [25] Lomanowski, B. A., Implementation of Window Shading Models into Dynamic Whole-Building Simulation, Ph. D. thesis, University of Waterloo, Waterloo, Ont., Canada, 2008, pp. 118-184
- [26] ***, Solar Heat Gain Factors (SHGF) for Selected Latitudes of the Northern Hemisphere, ASHRAE Handbook of Fundamentals, Chapter 15, 2009

- [27] Kamenko, I., et al., Web Based Application for Optimal Greenhouse Production System Selection, *Journal on Processing and Energy in Agriculture (former PTEP)*, 20 (2016), 4, pp. 182-185
- [28] Bugarski, V., et al., Trends in Modern Supervisory and Control Systems, *Journal on Processing and Energy in Agriculture (former PTEP)*, 19 (2015), 3, pp. 147-150
- [29] Vukmirović, S., et al., Software Architecture for Smart Metering Systems with Virtual Power Plant, *Proceedings, Melecon 2010 – 15th IEEE Mediterranean Electrotechnical Conference*, Valletta, Malta, 2010, pp. 448-451
- [30] ***, EnergyPlus building simulation software web page, <https://energyplus.net/>